

Quick Facts:

Civilian Labor Force North Carolina July 2010

Seasonally Adjusted
Employed – 4,069,757
Unemployed – 440,387

Source: Local Area Unemployment Statistics

NC Unemployment Rates July 2010

Seasonally Adjusted – 9.8
Not Seasonally Adjusted – 9.9

Source: Local Area Unemployment Statistics

NC UI Average Weekly Benefit

July 2010 – \$287.27

NC Maximum Weekly Benefit Amount – \$505

Source: ES-UI Reporting Unit, LMID

Gender of Initial Claimants In the Centralina WDB July 2010

Male – 61%

Female – 39%

Source: ES-UI Reporting Unit, LMID

Age Ranges of Initial Claimants In the Centralina WDB July 2010

16-19 – 1%

20-24 – 9%

25-34 – 22%

35-44 – 26%

45-54 – 24%

55-64 – 14%

≥65 – 4%

Source: ES-UI Reporting Unit, LMID

Civilian Labor Force Estimates* *Not Seasonally Adjusted*

		July 2010	June 2010	July 2009
Anson	Labor Force	10,009	10,153	10,109
	Employed	8,743	8,795	8,573
	Unemployed	1,266	1,358	1,536
	Unemployment Rate	12.6	13.4	15.2
Cabarrus	Labor Force	83,612	84,493	83,118
	Employed	74,906	75,348	73,452
	Unemployed	8,706	9,145	9,666
	Unemployment Rate	10.4	10.8	11.6
Iredell	Labor Force	78,724	78,884	83,316
	Employed	69,780	69,639	72,717
	Unemployed	8,944	8,145	10,599
	Unemployment Rate	11.4	11.7	12.7
Lincoln	Labor Force	37,069	37,449	39,821
	Employed	32,597	32,819	34,118
	Unemployed	4,472	4,630	5,703
	Unemployment Rate	12.1	12.4	14.3
Rowan	Labor Force	68,521	71,538	72,763
	Employed	60,419	63,076	63,164
	Unemployed	8,102	8,462	9,599
	Unemployment Rate	11.8	11.8	13.2
Stanly	Labor Force	30,292	30,674	31,654
	Employed	26,831	27,101	27,823
	Unemployed	3,461	3,573	3,831
	Unemployment Rate	11.4	11.6	12.1
Union	Labor Force	93,055	93,948	92,881
	Employed	84,519	85,018	82,879
	Unemployed	8,536	8,930	10,002
	Unemployment Rate	9.2	9.5	10.8
Centralina	Labor Force	401,282	407,139	413,662
	Employed	357,795	361,796	362,726
	Unemployed	43,487	45,343	50,936
	Unemployment Rate	10.8	11.1	12.3
North Carolina	Labor Force	4,541,470	4,549,616	4,588,510
	Employed	4,092,068	4,086,560	4,077,936
	Unemployed	449,402	463,056	510,574
	Unemployment Rate	9.9	10.2	11.1

Source: Local Area Unemployment Statistics

*July 2010 data are preliminary, while June 2010 are revised, and July 2009 are benchmarked.

Labor Market Information Update

Unemployment Insurance Claims, July 2010

	Initial Claims	Weeks Claimed	UI Benefits Paid	Individuals Receiving Benefits
Anson	193	1,753	\$303,713	402
Cabarrus	1,108	12,286	\$3,064,241	3,015
Iredell	1,136	10,270	\$2,506,122	2,650
Lincoln	733	4,864	\$1,126,951	1,299
Rowan	1,024	9,237	\$2,165,016	2,350
Stanly	534	4,088	\$950,015	1,082
Union	1,037	11,002	\$2,806,898	2,599
Statewide	64,963	581,309	\$138,833,733	145,255

Source: ES-UI Reporting Unit, Labor Market Information Division

Duration of Unemployment Insurance Benefits For 12 Months Ending July 31, 2010

Anson	Cabarrus	Iredell	Lincoln	Rowan	Stanly	Union	North Carolina
18.9	19.4	18.9	19.4	20.3	18.9	18.7	18.5

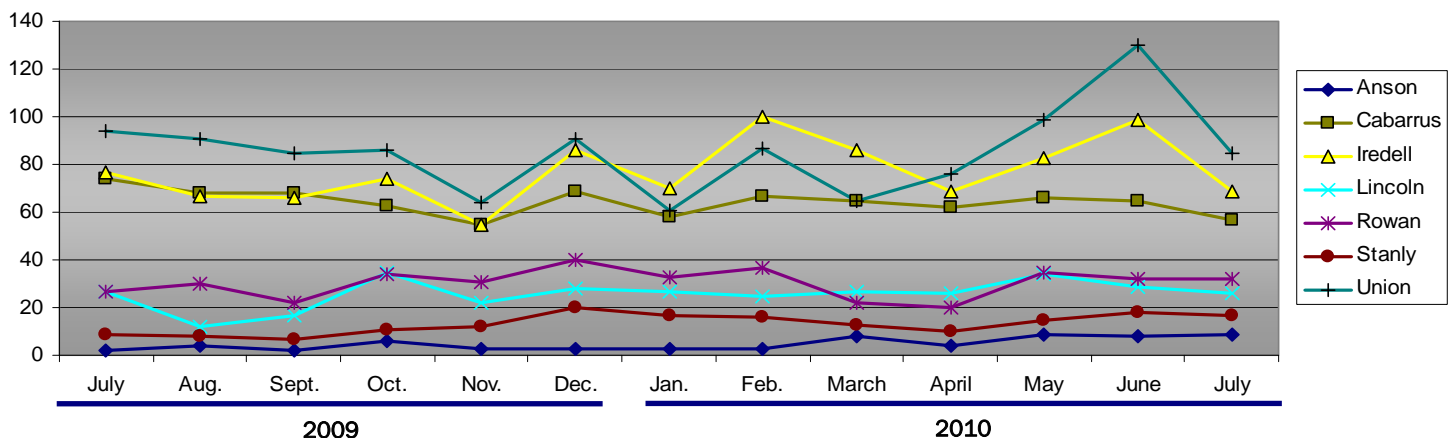
Note: Duration is the number of weeks compensated for the year divided by the number of first payments.

ESC Employment Service Registered Applicants, 7/1/2010–7/31/2010

	Anson	Cabarrus	Iredell	Lincoln	Rowan	Stanly	Union
Professional, Technical & Managerial	227	1,869	1,451	647	1,358	527	1,586
Clerical	187	1,220	946	492	1,190	432	931
Sales	45	480	389	196	437	158	414
Domestic Services	*	29	26	6	28	12	26
Other Services	334	954	1,000	378	1,417	521	666
Agriculture, Forestry & Fishery	32	79	74	46	93	41	83
Processing	163	280	259	115	325	177	178
Machine Trade	132	541	880	533	1,100	374	416
Benchwork	74	240	487	267	437	169	181
Structural Work	137	1,024	862	497	1,721	645	793
Motor Freight & Transportation	62	308	312	151	378	126	224
Packaging & Material Handling	181	708	898	375	1,070	298	390
Miscellaneous	*	63	43	26	77	28	81

Source: ES-UI Reporting Unit, Labor Market Information Division. Note: Active Applicants and Job Openings YTD for the period 7/01/10–6/30/11.

New Corporations, July 2009 – July 2010



Source: Department of the NC Secretary of State

Data provided by:

Labor Market Information, Employment Security Commission of North Carolina

P.O. Box 25903, Raleigh NC 27611

Phone: 919-733-2936 Fax: 919-733-8662

E-mail: esc.lmi.inquiries@ncesc.gov Web site: www.ncesc.com