

Quick Facts:

Civilian Labor Force North Carolina

March 2007

Seasonally Adjusted

Employed – 4,319,254

Unemployed – 201,717

NC Unemployment Rates

March 2007

Seasonally Adjusted – 4.5

Not Seasonally Adjusted – 4.5

NC UI Average

Weekly Benefit

March 2007 – \$258.29

NC Maximum Weekly Benefit

Amount – \$457

Gender of Initial Claimants

In the Centralina WDB

March 2007

Male – 52%

Female – 48%

Age Ranges of Initial Claimants

In the Centralina WDB

March 2007

16-19 – 1%

20-24 – 10%

25-34 – 22%

35-44 – 28%

45-54 – 22%

55-64 – 14%

≥65 – 3%

Civilian Labor Force Estimates* *Not Seasonally Adjusted*

		March 2007	February 2007	March 2006
Anson	Labor Force	11,287	11,299	10,912
	Employed	10,498	10,474	10,181
	Unemployed	789	825	731
	Unemployment Rate	7.0	7.3	6.7
Cabarrus	Labor Force	82,210	82,234	79,752
	Employed	79,018	78,842	76,633
	Unemployed	3,192	3,392	3,119
	Unemployment Rate	3.9	4.1	3.9
Iredell	Labor Force	77,499	77,316	75,491
	Employed	74,360	73,942	72,352
	Unemployed	3,139	3,374	3,139
	Unemployment Rate	4.1	4.4	4.2
Lincoln	Labor Force	38,753	38,623	37,631
	Employed	37,018	36,766	35,801
	Unemployed	1,735	1,857	1,830
	Unemployment Rate	4.5	4.8	4.9
Rowan	Labor Force	70,294	70,172	69,422
	Employed	67,042	66,625	66,320
	Unemployed	3,252	3,547	3,102
	Unemployment Rate	4.6	5.1	4.5
Stanly	Labor Force	30,672	30,638	30,045
	Employed	29,199	29,120	28,572
	Unemployed	1,473	1,518	1,473
	Unemployment Rate	4.8	5.0	4.9
Union	Labor Force	87,693	87,680	85,191
	Employed	84,422	84,233	81,874
	Unemployed	3,271	3,447	3,317
	Unemployment Rate	3.7	3.9	3.9
Centralina	Labor Force	398,408	397,962	388,444
	Employed	381,557	380,002	371,733
	Unemployed	16,851	17,960	16,711
	Unemployment Rate	4.2	4.5	4.3
North Carolina	Labor Force	4,497,645	4,489,244	4,394,918
	Employed	4,294,479	4,270,211	4,193,029
	Unemployed	203,166	219,033	201,889
	Unemployment Rate	4.5	4.9	4.6

*2007 data are preliminary, while 2006 data are benchmarked.

Labor Market Information Update

Unemployment Insurance Claims, March 2007

	Initial Claims	Weeks Claimed	UI Benefits Paid	Individuals Receiving Checks
Anson	188	1,306	237,063	372
Cabarrus	556	4,385	981,674	1,247
Iredell	544	4,461	1,039,680	1,156
Lincoln	440	2,645	571,640	773
Rowan	506	4,320	906,201	1,109
Stanly	573	2,353	444,834	781
Union	552	4,122	957,160	1,003
Statewide	43,959	307,263	69,208,722	85,852

Source: ES-UI Reporting Unit, Labor Market Information Division

Duration of Unemployment Insurance Benefits For 12 Months Ending March 2007

Anson	Cabarrus	Iredell	Lincoln	Rowan	Stanly	Union	North Carolina
15.4	14.1	14.2	13.0	14.5	12.7	14.1	13.6

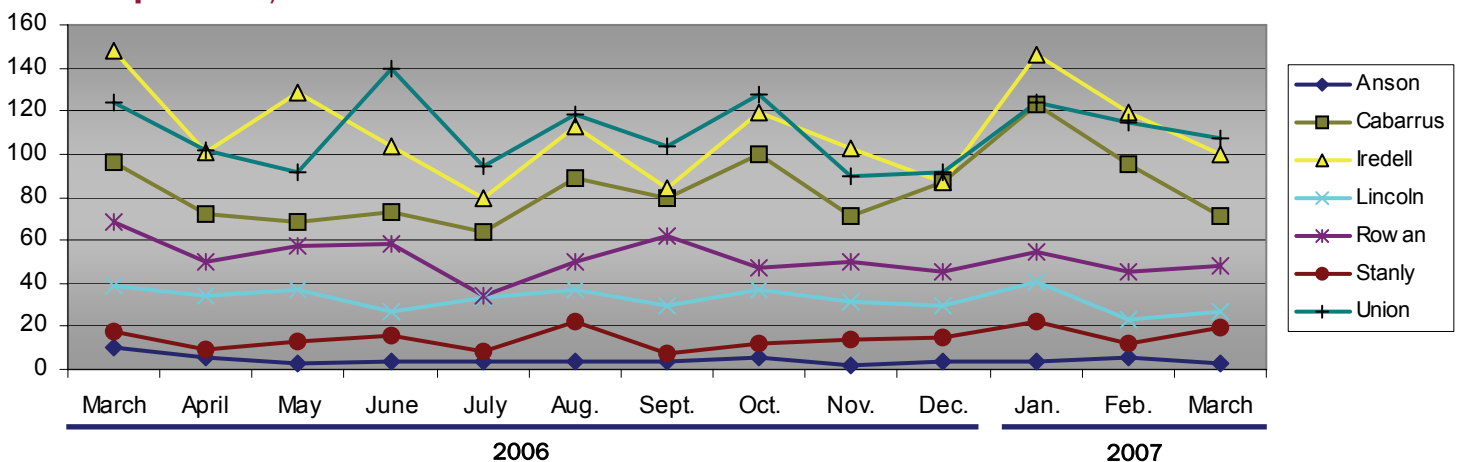
Note: Duration is the number of weeks compensated for the year divided by the number of first payments.

ESC Employment Service Registered Applicants, 7/1/2006–03/31/2007*

	Anson	Cabarrus	Iredell	Lincoln	Rowan	Stanly	Union
Professional, Technical & Managerial	299	2,052	2,075	785	1,518	727	1,581
Clerical	340	1,814	1,743	859	1,778	699	1,271
Sales	59	561	559	241	580	175	472
Domestic Services	6	35	33	28	35	25	28
Other Services	723	1,605	1,585	714	2,339	821	1,030
Agriculture, Forestry & Fishery	84	122	144	47	135	59	80
Processing	377	429	314	139	359	265	328
Machine Trade	273	830	1,110	851	1,359	546	454
Benchwork	158	530	749	437	574	264	299
Structural Work	222	1,020	910	499	1,450	593	633
Motor Freight & Transportation	85	383	440	191	477	136	242
Packaging & Material Handling	368	1,156	1,463	613	1,536	480	579
Miscellaneous	25	57	88	36	78	32	85

*Active Applicants YTD for period 7/1/06 – 6/30/07

New Corporations, March 2006 – March 2007



Source: Department of the NC Secretary of State

Data provided by:

Labor Market Information, Employment Security Commission of North Carolina

P.O. Box 25903, Raleigh NC 27611

Phone: 919-733-2936 Fax: 919-733-8662

E-mail: esc.lmi.inquiries@ncmail.net Web site: www.ncesc.com