

## Quick Facts:

*Civilian Labor Force  
North Carolina*

*February 2008*

*Seasonally Adjusted*

*Employed – 4,306,216*

*Unemployed – 226,447*

*NC Unemployment Rates*

*February 2008*

*Seasonally Adjusted – 5.0*

*Not Seasonally Adjusted – 5.4*

*NC UI Average*

*Weekly Benefit*

*February 2008 – \$272.57*

*NC Maximum Weekly Benefit*

*Amount – \$476*

*Gender of Initial Claimants*

*In the Centralina WDB*

*February 2008*

*Male – 70%*

*Female – 30%*

*Age Ranges of Initial Claimants*

*In the Centralina WDB*

*February 2008*

*16-19 – 1%*

*20-24 – 7%*

*25-34 – 22%*

*35-44 – 30%*

*45-54 – 25%*

*55-64 – 13%*

*≥65 – 2%*

## Civilian Labor Force Estimates\* *Not Seasonally Adjusted*

		February 2008	January 2008	February 2007
<b>Anson</b>	Labor Force	10,711	10,715	11,299
	Employed	9,896	9,906	10,474
	Unemployed	815	809	825
	Unemployment Rate	7.6	7.6	7.3
<b>Cabarrus</b>	Labor Force	81,506	81,672	82,234
	Employed	77,626	77,700	78,842
	Unemployed	3,880	3,972	3,392
	Unemployment Rate	4.8	4.9	4.1
<b>Iredell</b>	Labor Force	81,440	81,687	77,316
	Employed	77,345	77,504	73,942
	Unemployed	4,095	4,183	3,374
	Unemployment Rate	5.0	5.1	4.4
<b>Lincoln</b>	Labor Force	40,963	40,884	38,623
	Employed	38,603	38,553	36,766
	Unemployed	2,360	2,331	1,857
	Unemployment Rate	5.8	5.7	4.8
<b>Rowan</b>	Labor Force	71,254	72,075	70,172
	Employed	67,298	67,510	66,625
	Unemployed	3,956	4,565	3,547
	Unemployment Rate	5.6	6.3	5.1
<b>Stanly</b>	Labor Force	31,265	31,324	30,638
	Employed	29,594	29,710	29,120
	Unemployed	1,671	1,614	1,518
	Unemployment Rate	5.3	5.2	5.0
<b>Union</b>	Labor Force	90,079	89,941	87,680
	Employed	85,709	85,790	84,233
	Unemployed	4,370	4,151	3,447
	Unemployment Rate	4.9	4.6	3.9
<b>Centralina</b>	Labor Force	407,218	408,298	397,962
	Employed	386,071	386,673	380,002
	Unemployed	21,147	21,625	17,960
	Unemployment Rate	5.2	5.3	4.5
<b>North Carolina</b>	Labor Force	4,499,824	4,512,492	4,487,940
	Employed	4,255,282	4,272,980	4,268,075
	Unemployed	244,542	239,512	219,865
	Unemployment Rate	5.4	5.3	4.9

\*February 2008 data are preliminary, while January 2008 data are revised. 2007 county data are preliminary, while 2007 statewide data are benchmarked.

# Labor Market Information Update

## Unemployment Insurance Claims, February 2008

	Initial Claims	Weeks Claimed	UI Benefits Paid	Individuals Receiving Checks
Anson	178	1,247	\$227,470	351
Cabarrus	878	5,906	\$1,486,311	1,689
Iredell	1,341	6,583	\$1,681,053	2,094
Lincoln	802	3,917	\$909,334	1,229
Rowan	1,858	6,520	\$1,739,740	2,587
Stanly	576	2,626	\$571,138	802
Union	902	6,189	\$1,518,357	1,578
Statewide	56,410	378,104	\$89,435,088	105,178

Source: ES-UI Reporting Unit, Labor Market Information Division

## Duration of Unemployment Insurance Benefits For 12 Months Ending Feb. 29, 2008

Anson	Cabarrus	Iredell	Lincoln	Rowan	Stanly	Union	North Carolina
14.4	14.2	12.3	12.3	12.5	12.2	13.4	13.6

Note: Duration is the number of weeks compensated for the year divided by the number of first payments.

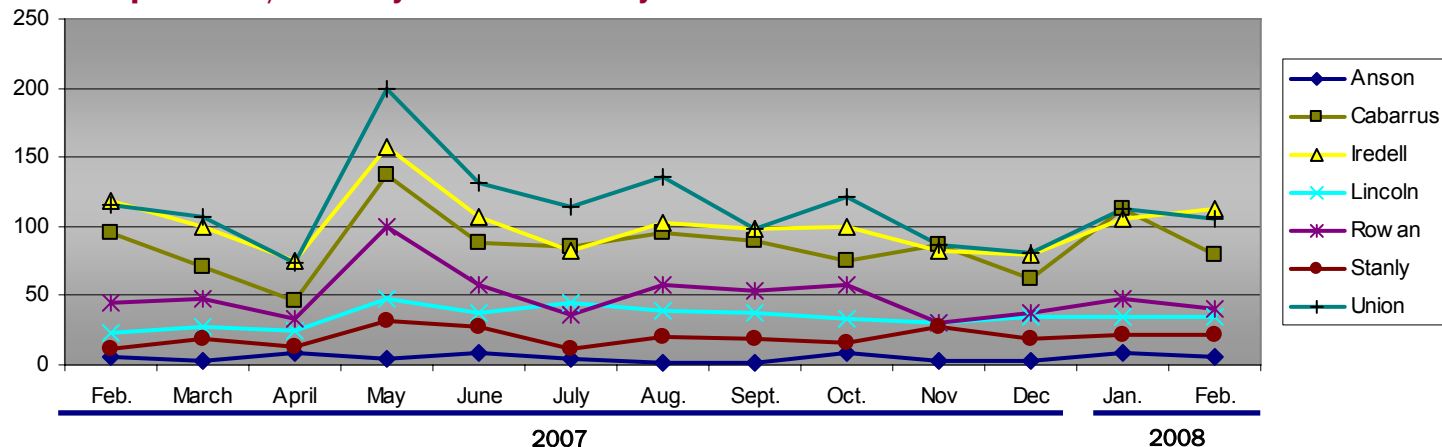
## ESC Employment Service Registered Applicants, 7/1/2007–02/29/2008

	Anson	Cabarrus	Iredell	Lincoln	Rowan	Stanly	Union
Professional, Technical & Managerial	331	2,220	1,936	765	1,446	661	1,808
Clerical	358	1,790	1,633	779	1,673	675	1,354
Sales	90	591	584	251	545	198	547
Domestic Services	4	31	37	11	30	32	44
Other Services	708	1,560	1,452	660	2,144	849	1,033
Agriculture, Forestry & Fishery	74	103	133	47	125	60	86
Processing	285	382	316	125	351	237	294
Machine Trade	245	737	1,135	734	1,152	468	463
Benchwork	133	400	682	464	521	248	276
Structural Work	211	1,089	977	542	1,550	637	859
Motor Freight & Transportation	90	443	448	194	471	188	271
Packaging & Material Handling	333	1,039	1,336	601	1,367	442	572
Miscellaneous	18	72	86	35	68	30	95

Note: Active Applicants and Job Openings YTD for the period 7/01/07–06/30/08.

\*Data of three or less is suppressed.

## New Corporations, February 2007 – February 2008



Source: Department of the NC Secretary of State