

## Quick Facts:

Civilian Labor Force  
North Carolina  
November 2009

Seasonally Adjusted

Employed - 4,047,161

Unemployed - 487,631

NC Unemployment Rates  
November 2009

Seasonally Adjusted - 10.8

Not Seasonally Adjusted - 10.7

NC UI Average  
Weekly Benefit

November 2009 - \$295.83

NC Maximum Weekly Benefit  
Amount - \$505

Gender of Initial Claimants  
In the Centralina WDB  
November 2009

Male - 71%

Female - 29%

Age Ranges of Initial Claimants  
In the Centralina WDB  
November 2009

16-19 - 2%

20-24 - 9%

25-34 - 22%

35-44 - 26%

45-54 - 24%

55-64 - 14%

≥65 - 3%

## Civilian Labor Force Estimates\* Not Seasonally Adjusted

		November 2009	October 2009	November 2008
<b>Anson</b>	Labor Force	10,543	10,646	10,583
	Employed	8,970	8,996	9,403
	Unemployed	1,573	1,650	1,180
	Unemployment Rate	14.9	15.5	11.1
<b>Cabarrus</b>	Labor Force	84,086	84,269	84,051
	Employed	74,240	74,454	77,824
	Unemployed	9,846	9,815	6,227
	Unemployment Rate	11.7	11.6	7.4
<b>Iredell</b>	Labor Force	79,777	79,985	79,001
	Employed	69,739	69,827	72,427
	Unemployed	10,038	10,158	6,574
	Unemployment Rate	12.6	12.7	8.3
<b>Lincoln</b>	Labor Force	38,690	39,015	39,722
	Employed	33,403	33,613	36,046
	Unemployed	5,287	5,402	3,676
	Unemployment Rate	13.7	13.8	9.3
<b>Rowan</b>	Labor Force	71,210	71,255	70,352
	Employed	61,875	61,844	64,239
	Unemployed	9,335	9,411	6,113
	Unemployment Rate	13.1	13.2	8.7
<b>Stanly</b>	Labor Force	30,082	30,218	30,290
	Employed	26,293	26,395	27,605
	Unemployed	3,789	3,823	2,685
	Unemployment Rate	12.6	12.7	8.9
<b>Union</b>	Labor Force	92,339	92,415	93,373
	Employed	82,734	82,973	86,728
	Unemployed	9,605	9,442	6,645
	Unemployment Rate	10.4	10.2	7.1
<b>Centralina</b>	Labor Force	406,727	407,803	407,372
	Employed	357,254	358,102	374,272
	Unemployed	49,473	49,701	33,100
	Unemployment Rate	12.2	12.2	8.1
<b>North Carolina</b>	Labor Force	4,531,625	4,542,090	4,549,062
	Employed	4,048,200	4,059,630	4,200,942
	Unemployed	483,425	482,460	348,120
	Unemployment Rate	10.7	10.6	7.7

Source: Labor Area Unemployment Statistics

\*November 2009 data are preliminary, while October 2009 are revised and November 2008 data are benchmarked.

# Labor Market Information Update

## Unemployment Insurance Claims, November 2009

	Initial Claims	Weeks Claimed	UI Benefits Paid	Individuals Receiving Checks
Anson	283	2,879	603,711	690
Cabarrus	1,646	18,785	5,333,987	4,409
Iredell	1,694	17,489	4,730,186	4,222
Lincoln	863	8,904	2,337,441	2,239
Rowan	1,563	16,309	4,534,246	3,940
Stanly	737	6,686	1,739,904	1,635
Union	1,582	16,822	4,701,403	3,899
Statewide	88,938	852,682	218,118,047	205,202

Source: ES-UI Reporting Unit, Labor Market Information Division

## Duration of Unemployment Insurance Benefits For 12 Months Ending Nov. 30, 2009

Anson	Cabarrus	Iredell	Lincoln	Rowan	Stanly	Union	North Carolina
15.7	17.4	17.0	16.9	17.3	16.8	17.5	16.6

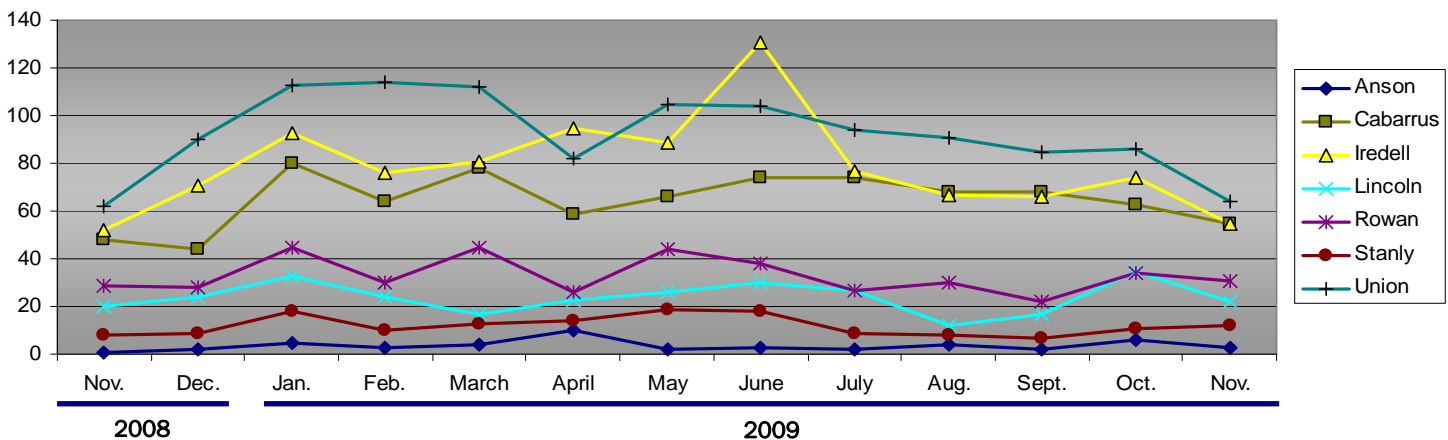
Note: Duration is the number of weeks compensated for the year divided by the number of first payments.

## ESC Employment Service Registered Applicants, 7/1/2009–11/30/2009

	Anson	Cabarrus	Iredell	Lincoln	Rowan	Stanly	Union
Professional, Technical & Managerial	381	3,349	2,615	1,030	1,922	852	3,070
Clerical	292	1,937	1,711	782	1,571	577	1,615
Sales	84	898	773	328	586	229	819
Domestic Services	8	29	50	17	31	30	43
Other Services	624	1,513	1,744	589	2,011	714	1,091
Agriculture, Forestry & Fishery	72	153	152	59	144	64	129
Processing	293	525	405	147	468	228	326
Machine Trade	235	983	1,578	900	1,510	577	737
Benchwork	136	382	819	518	552	221	289
Structural Work	239	1,798	1,487	845	2,243	816	1,433
Motor Freight & Transportation	119	557	543	251	561	201	380
Packaging & Material Handling	305	1,132	1,490	652	1,452	380	575
Miscellaneous	22	125	109	32	89	42	111

Note: Active Applicants and Job Openings YTD for the period 7/01/09–06/30/10. \* Data of three or less is suppressed.

## New Corporations, November 2008 – November 2009



Source: Department of the NC Secretary of State

Data provided by:

Labor Market Information, Employment Security Commission of North Carolina

P.O. Box 25903, Raleigh NC 27611

Phone: 919-733-2936 Fax: 919-733-8662

E-mail: [esc.lmi.inquiries@ncmail.net](mailto:esc.lmi.inquiries@ncmail.net) Web site: [www.ncesc.com](http://www.ncesc.com)