

Quick Facts:

**Civilian Labor Force
North Carolina
January 2010**

Seasonally Adjusted

Employed - 4,036,018

Unemployed - 502,533

**NC Unemployment Rates
January 2010**

Seasonally Adjusted - 11.1

Not Seasonally Adjusted - 11.8

**NC UI Average
Weekly Benefit**

January 2010 - \$290.84

**NC Maximum Weekly Benefit
Amount - \$505**

**Gender of Initial Claimants
In the Centralina WDB
January 2010**

Male - 71%

Female - 29%

**Age Ranges of Initial Claimants
In the Centralina WDB
January 2010**

16-19 - 1%

20-24 - 9%

25-34 - 21%

35-44 - 25%

45-54 - 26%

55-64 - 15%

≥65 - 3%

Civilian Labor Force Estimates* *Not Seasonally Adjusted*

		January 2010	December 2009	January 2009
Anson	Labor Force	10,347	10,400	10,458
	Employed	8,574	8,866	9,012
	Unemployed	1,773	1,534	1,446
	Unemployment Rate	17.1	14.8	13.8
Cabarrus	Labor Force	84,435	83,439	82,948
	Employed	73,453	73,372	74,586
	Unemployed	10,982	10,067	8,362
	Unemployment Rate	13.0	12.1	10.1
Iredell	Labor Force	80,721	79,246	81,546
	Employed	69,686	68,938	72,255
	Unemployed	11,035	10,308	9,291
	Unemployment Rate	13.7	13.0	11.4
Lincoln	Labor Force	38,817	38,389	40,109
	Employed	33,153	32,957	35,126
	Unemployed	5,664	5,432	4,983
	Unemployment Rate	14.6	14.1	12.4
Rowan	Labor Force	72,253	70,530	72,499
	Employed	62,302	61,202	64,481
	Unemployed	9,951	9,328	8,018
	Unemployment Rate	13.8	13.2	11.1
Stanly	Labor Force	30,571	29,748	30,884
	Employed	26,419	25,924	27,272
	Unemployed	4,152	3,824	3,612
	Unemployment Rate	13.6	12.9	11.7
Union	Labor Force	93,627	91,353	92,023
	Employed	82,880	81,768	83,120
	Unemployed	10,747	9,585	8,903
	Unemployment Rate	11.5	10.5	9.7
Centralina	Labor Force	410,771	403,105	410,467
	Employed	356,467	353,027	365,852
	Unemployed	54,304	50,078	44,615
	Unemployment Rate	13.2	12.4	10.9
North Carolina	Labor Force	4,523,108	4,488,354	4,536,787
	Employed	3,990,829	3,997,906	4,093,971
	Unemployed	532,279	490,448	442,816
	Unemployment Rate	11.8	10.9	9.8

Source: Labor Area Unemployment Statistics

*January 2010 and December 2009 county data are preliminary, while January 2009 data are revised. January 2010 state data are preliminary, while 2009 data are benchmarked.

Labor Market Information Update

Unemployment Insurance Claims, January 2010

	Initial Claims	Weeks Claimed	UI Benefits Paid	Individuals Receiving Checks
Anson	518	3,304	\$626,286	880
Cabarrus	2,050	20,141	\$5,630,947	4,942
Iredell	2,123	19,772	\$5,127,806	4,929
Lincoln	1,211	9,259	\$2,412,529	2,401
Rowan	1,735	16,907	\$4,353,296	4,277
Stanly	966	7,565	\$1,872,652	1,917
Union	2,087	18,128	\$4,920,069	4,521
Statewide	110,710	930,945	\$233,683,634	237,759

Source: ES-UI Reporting Unit, Labor Market Information Division

Duration of Unemployment Insurance Benefits For 12 Months Ending Jan. 31, 2010

Anson	Cabarrus	Iredell	Lincoln	Rowan	Stanly	Union	North Carolina
17.5	18.5	18.9	18.5	18.4	19.4	18.5	17.8

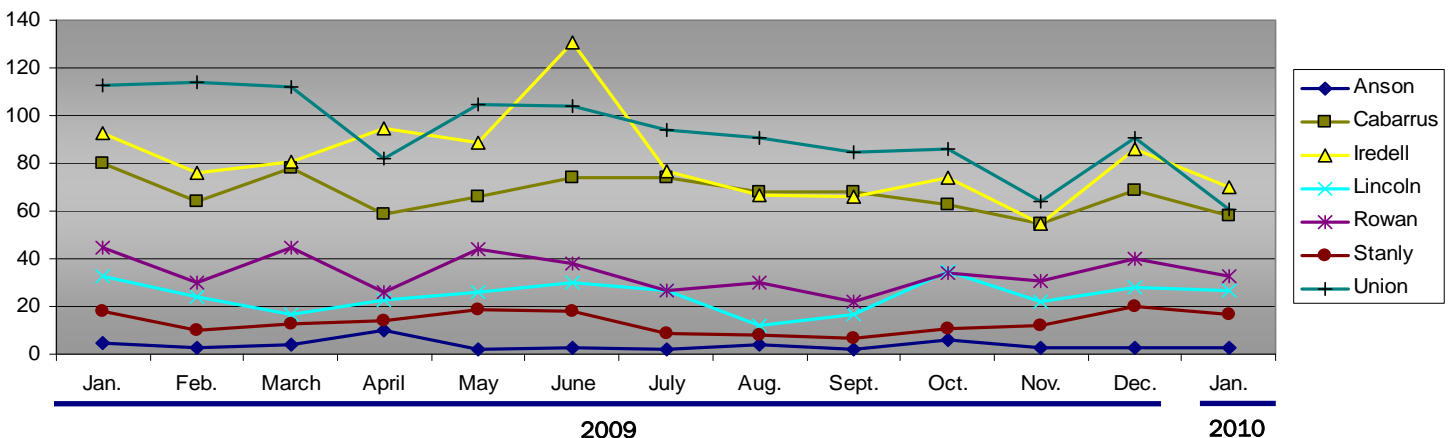
Note: Duration is the number of weeks compensated for the year divided by the number of first payments.

ESC Employment Service Registered Applicants, 7/1/2009–1/31/2010

	Anson	Cabarrus	Iredell	Lincoln	Rowan	Stanly	Union
Professional, Technical & Managerial	422	3,784	2,962	1,173	2,107	958	3,425
Clerical	326	2,202	1,898	873	1,787	652	1,794
Sales	94	1,002	879	360	659	262	943
Domestic Services	8	32	57	19	34	30	47
Other Services	682	1,719	1,980	684	2,259	809	1,248
Agriculture, Forestry & Fishery	82	173	179	68	158	76	159
Processing	319	564	446	168	494	248	366
Machine Trade	257	1,114	1,778	970	1,653	636	830
Benchwork	145	424	886	549	608	243	321
Structural Work	283	2,047	1,686	926	2,548	953	1,615
Motor Freight & Transportation	127	638	609	273	612	222	439
Packaging & Material Handling	328	1,276	1,652	708	1,623	432	647
Miscellaneous	25	138	121	40	106	48	129

Note: Active Applicants and Job Openings YTD for the period 7/01/09–6/30/10. * Data of three or less is suppressed.

New Corporations, January 2009 – January 2010



Source: Department of the NC Secretary of State

Data provided by:

Labor Market Information, Employment Security Commission of North Carolina

P.O. Box 25903, Raleigh NC 27611

Phone: 919-733-2936 Fax: 919-733-8662

E-mail: esc.lmi.inquiries@ncmail.net Web site: www.ncesc.com