

Quick Facts:

*Civilian Labor Force
North Carolina*

December 2008

Seasonally Adjusted

Employed – 4,166,266

Unemployed – 396,846

NC Unemployment Rates

December 2008

Seasonally Adjusted – 8.7

Not Seasonally Adjusted – 8.5

NC UI Average

Weekly Benefit

December 2008 – \$278.00

NC Maximum Weekly Benefit

Amount – \$494

Gender of Initial Claimants

In the Centralina WDB

December 2008

Male – 68%

Female – 32%

Age Ranges of Initial Claimants

In the Centralina WDB

December 2008

16-19 – 1%

20-24 – 9%

25-34 – 20%

35-44 – 27%

45-54 – 26%

55-64 – 14%

≥65 – 3%

Civilian Labor Force Estimates* *Not Seasonally Adjusted*

		December 2008	November 2008	December 2007
Anson	Labor Force	10,901	10,897	10,727
	Employed	9,529	9,681	9,968
	Unemployed	1,372	1,216	759
	Unemployment Rate	12.6	11.2	7.1
Cabarrus	Labor Force	81,662	82,273	81,787
	Employed	74,746	75,935	78,188
	Unemployed	6,916	6,338	3,599
	Unemployment Rate	8.5	7.7	4.4
Iredell	Labor Force	82,975	82,847	82,150
	Employed	75,366	76,138	78,376
	Unemployed	7,609	6,709	3,774
	Unemployment Rate	9.2	8.1	4.6
Lincoln	Labor Force	40,558	40,779	40,158
	Employed	36,323	37,015	38,122
	Unemployed	4,235	3,764	2,036
	Unemployment Rate	10.4	9.2	5.1
Rowan	Labor Force	73,011	73,186	72,491
	Employed	66,253	66,913	68,329
	Unemployed	6,758	6,273	4,162
	Unemployment Rate	9.3	8.6	5.7
Stanly	Labor Force	31,215	31,290	31,215
	Employed	28,241	28,528	29,671
	Unemployed	2,974	2,762	1,544
	Unemployment Rate	9.5	8.8	4.9
Union	Labor Force	89,850	90,598	90,017
	Employed	82,529	83,842	86,329
	Unemployed	7,321	6,756	3,688
	Unemployment Rate	8.1	7.5	4.1
Centralina	Labor Force	410,172	411,870	408,545
	Employed	372,987	378,052	388,983
	Unemployed	37,185	33,818	19,562
	Unemployment Rate	9.1	8.2	4.8
North Carolina	Labor Force	4,532,503	4,561,213	4,508,236
	Employed	4,148,975	4,205,375	4,296,326
	Unemployed	383,528	355,838	211,910
	Unemployment Rate	8.5	7.8	4.7

*December 2008 data are preliminary, while November 2008 data are revised. December 2007 data are benchmarked.

Labor Market Information Update

Unemployment Insurance Claims, December 2008

	Initial Claims	Weeks Claimed	UI Benefits Paid	Individuals Receiving Checks
Anson	643	2,988	\$557,210	734
Cabarrus	2,394	13,998	\$3,238,056	3,122
Iredell	3,864	17,079	\$3,893,297	4,086
Lincoln	2,080	9,249	\$2,138,751	2,360
Rowan	2,660	13,686	\$3,176,567	3,298
Stanly	1,861	7,133	\$1,514,360	1,863
Union	2,323	14,116	\$3,622,960	3,111
Statewide	155,913	789,562	\$194,168,340	189,458

Source: ES-UI Reporting Unit, Labor Market Information Division

Duration of Unemployment Insurance Benefits For 12 Months Ending December 31, 2008

Anson	Cabarrus	Iredell	Lincoln	Rowan	Stanly	Union	North Carolina
12.8	13.6	12.5	12.1	13.4	11.8	13.5	13.2

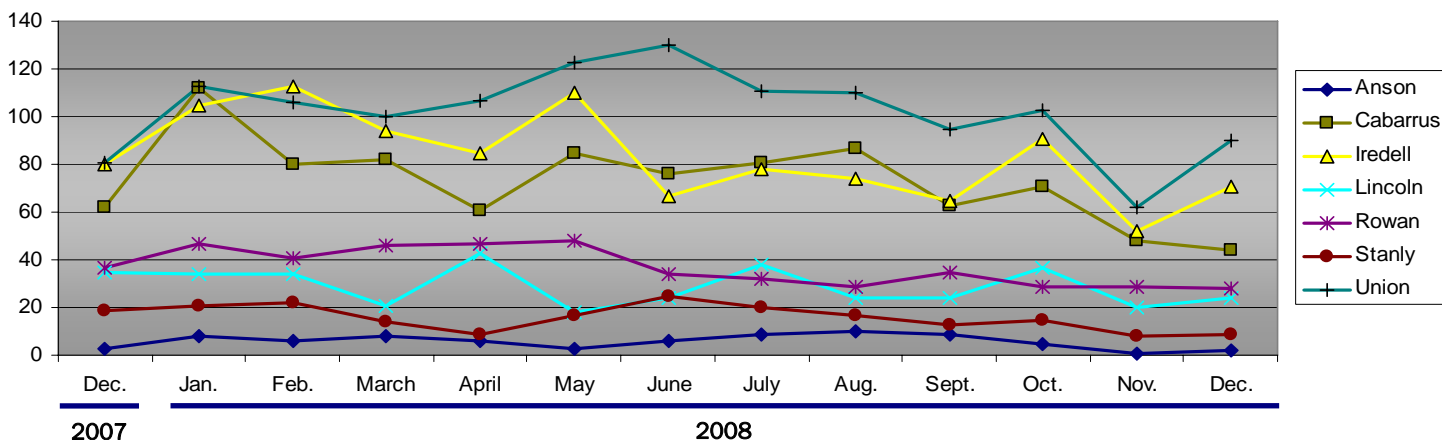
Note: Duration is the number of weeks compensated for the year divided by the number of first payments.

ESC Employment Service Registered Applicants, 7/1/2008–12/31/2008

	Anson	Cabarrus	Iredell	Lincoln	Rowan	Stanly	Union
Professional, Technical & Managerial	385	2,560	2,272	903	1,589	807	2,353
Clerical	344	1,900	1,721	777	1,665	631	1,517
Sales	91	757	695	285	602	221	696
Domestic Services	10	42	50	18	33	22	35
Other Services	649	1,482	1,711	597	2,038	781	981
Agriculture, Forestry & Fishery	88	146	148	53	128	74	118
Processing	313	371	381	146	374	198	292
Machine Trade	214	797	1,409	798	1,176	424	596
Benchwork	132	351	760	516	479	222	266
Structural Work	231	1,476	1,231	735	1,919	775	1,213
Motor Freight & Transportation	126	535	521	256	505	193	335
Packaging & Material Handling	331	1,032	1,424	639	1,366	427	572
Miscellaneous	25	74	91	35	95	44	141

Note: Active Applicants and Job Openings YTD for the period 7/01/08–06/30/09.

New Corporations, December 2007 – December 2008



Source: Department of the NC Secretary of State

Data provided by:

Labor Market Information, Employment Security Commission of North Carolina

P.O. Box 25903, Raleigh NC 27611

Phone: 919-733-2936 Fax: 919-733-8662

E-mail: esc.lmi.inquiries@ncmail.net Web site: www.ncesc.com