

Quick Facts:

Civilian Labor Force
North Carolina
December 2009

Seasonally Adjusted

Employed - 4,016,382

Unemployed - 505,939

NC Unemployment Rates
December 2009

Seasonally Adjusted - 11.2

Not Seasonally Adjusted - 10.9

NC UI Average
Weekly Benefit

December 2009 - \$289.01

NC Maximum Weekly Benefit
Amount - \$505

Gender of Initial Claimants
In the Centralina WDB
December 2009

Male - 71%

Female - 29%

Age Ranges of Initial Claimants
In the Centralina WDB
December 2009

16-19 - 1%

20-24 - 9%

25-34 - 22%

35-44 - 26%

45-54 - 25%

55-64 - 14%

≥65 - 3%

Civilian Labor Force Estimates* Not Seasonally Adjusted

		December 2009	November 2009	December 2008
Anson	Labor Force	10,400	10,518	10,635
	Employed	8,866	8,968	9,285
	Unemployed	1,534	1,550	1,350
	Unemployment Rate	14.8	14.7	12.7
Cabarrus	Labor Force	83,439	83,960	83,738
	Employed	73,372	74,219	76,840
	Unemployed	10,067	9,741	6,898
	Unemployment Rate	12.1	11.6	8.2
Iredell	Labor Force	79,246	79,730	79,223
	Employed	68,938	69,686	71,660
	Unemployed	10,308	10,044	7,563
	Unemployment Rate	13.0	12.6	9.5
Lincoln	Labor Force	38,389	38,661	39,690
	Employed	32,957	33,381	35,491
	Unemployed	5,432	5,280	4,199
	Unemployment Rate	14.1	13.7	10.6
Rowan	Labor Force	70,530	71,144	70,296
	Employed	61,202	61,830	63,599
	Unemployed	9,328	9,314	6,697
	Unemployment Rate	13.2	13.1	9.5
Stanly	Labor Force	29,748	30,048	30,268
	Employed	25,924	26,275	27,339
	Unemployed	3,824	3,773	2,929
	Unemployment Rate	12.9	12.6	9.7
Union	Labor Force	91,353	92,217	92,936
	Employed	81,768	82,710	85,632
	Unemployed	9,585	9,507	7,304
	Unemployment Rate	10.5	10.3	7.9
Centralina	Labor Force	403,105	406,278	406,786
	Employed	353,027	357,069	369,846
	Unemployed	50,078	49,209	36,940
	Unemployment Rate	12.4	12.1	9.1
North Carolina	Labor Force	4,491,366	4,531,516	4,518,472
	Employed	3,999,788	4,048,712	4,137,880
	Unemployed	491,578	482,804	380,592
	Unemployment Rate	10.9	10.7	8.4

Source: Labor Area Unemployment Statistics

*December 2009 data are preliminary, while November 2009 are revised and December 2008 data are benchmarked.

Labor Market Information Update

Unemployment Insurance Claims, December 2009

	Initial Claims	Weeks Claimed	UI Benefits Paid	Individuals Receiving Checks
Anson	563	2,936	\$590,875	830
Cabarrus	2,011	18,218	\$4,942,602	4,578
Iredell	2,107	17,319	\$4,449,496	4,371
Lincoln	1,048	8,821	\$2,238,986	2,314
Rowan	1,761	15,159	\$4,009,980	3,888
Stanly	951	6,760	\$1,670,361	1,808
Union	1,860	16,526	\$4,497,621	4,158
Statewide	107,302	862,882	\$213,491,396	218,772

Source: ES-UI Reporting Unit, Labor Market Information Division

Duration of Unemployment Insurance Benefits For 12 Months Ending Dec. 31, 2009

Anson	Cabarrus	Iredell	Lincoln	Rowan	Stanly	Union	North Carolina
16.6	18.0	17.6	17.5	17.8	17.8	17.9	17.1

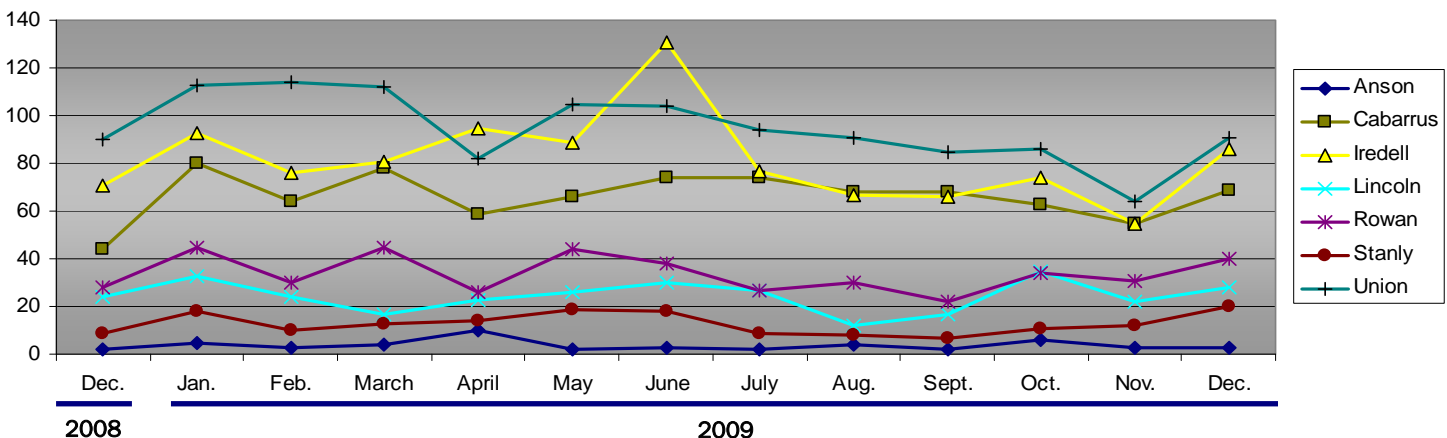
Note: Duration is the number of weeks compensated for the year divided by the number of first payments.

ESC Employment Service Registered Applicants, 7/1/2009–12/31/2009

	Anson	Cabarrus	Iredell	Lincoln	Rowan	Stanly	Union
Professional, Technical & Managerial	401	3,579	2,768	1,082	1,995	903	3,227
Clerical	307	2,067	1,783	825	1,659	615	1,702
Sales	85	944	830	344	621	245	865
Domestic Services	8	31	51	17	32	30	44
Other Services	658	1,600	1,853	635	2,129	758	1,164
Agriculture, Forestry & Fishery	78	162	161	64	153	71	145
Processing	303	547	421	157	481	239	347
Machine Trade	246	1,038	1,666	938	1,573	600	782
Benchwork	141	400	841	537	584	232	305
Structural Work	260	1,931	1,574	886	2,394	864	1,520
Motor Freight & Transportation	122	602	580	265	583	213	407
Packaging & Material Handling	315	1,197	1,559	683	1,541	399	605
Miscellaneous	22	129	115	34	98	48	122

Note: Active Applicants and Job Openings YTD for the period 7/01/09–06/30/10. * Data of three or less is suppressed.

New Corporations, December 2008 – December 2009



Source: Department of the NC Secretary of State

Data provided by:

Labor Market Information, Employment Security Commission of North Carolina

P.O. Box 25903, Raleigh NC 27611

Phone: 919-733-2936 Fax: 919-733-8662

E-mail: esc.lmi.inquiries@ncmail.net Web site: www.ncesc.com