

Quick Facts

Civilian Labor Force North Carolina December 2011

Seasonally Adjusted

Employed – 4,061,136

Unemployed – 446,402

Source: LAUS, NC Dept of Commerce,
Labor and Economic Analysis Division

NC Unemployment Rates December 2011

Seasonally Adjusted – 9.9

Not Seasonally Adjusted – 9.8

Source: LAUS, NC Dept of Commerce,
Labor and Economic Analysis Division

NC UI Average Weekly Benefit

December 2011 – \$280.12

NC Maximum Weekly Benefit Amount – \$522

Source: WRER, NC Dept of Commerce,
Labor and Economic Analysis Division

Gender of Initial Claimants in the Centralina WDB* December 2011

Male – 68%

Female – 32%

Source: WRER, NC Dept of Commerce,
Labor and Economic Analysis Division

*May not sum due to rounding and unreported category.

Age Ranges of Initial Claimants in the Centralina WDB* December 2011

16-19 – 1%

20-24 – 9%

25-34 – 22%

35-44 – 24%

45-54 – 27%

55-64 – 15%

≥65 – 3%

Source: WRER, NC Dept of Commerce,
Labor and Economic Analysis Division

*May not sum due to rounding and unreported category.

Civilian Labor Force Estimates* Not Seasonally Adjusted

		December 2011	November 2011	December 2010
Anson	Labor Force	9,638	9,636	9,716
	Employed	8,473	8,526	8,488
	Unemployed	1,165	1,110	1,228
	Unemployment Rate	12.1	11.5	12.6
Cabarrus	Labor Force	82,526	82,544	82,918
	Employed	74,405	74,877	74,543
	Unemployed	8,121	7,667	8,375
	Unemployment Rate	9.8	9.3	10.1
Iredell	Labor Force	79,647	76,964	76,677
	Employed	71,381	71,956	68,210
	Unemployed	8,266	8,008	8,467
	Unemployment Rate	10.4	10.0	11.0
Lincoln	Labor Force	37,432	37,522	37,349
	Employed	33,383	33,619	33,117
	Unemployed	4,049	3,903	4,232
	Unemployment Rate	10.8	10.4	11.3
Rowan	Labor Force	68,263	68,507	67,495
	Employed	60,917	61,288	59,777
	Unemployed	7,346	7,219	7,718
	Unemployment Rate	10.8	10.5	11.4
Stanly	Labor Force	29,647	29,766	29,071
	Employed	26,596	26,718	25,844
	Unemployed	3,051	3,048	3,227
	Unemployment Rate	10.3	10.2	11.1
Union	Labor Force	92,798	93,101	92,930
	Employed	84,550	85,086	84,707
	Unemployed	8,248	8,015	8,223
	Unemployment Rate	8.9	8.6	8.8
Centralina	Labor Force	399,951	401,040	396,156
	Employed	359,705	362,070	354,686
	Unemployed	40,246	38,970	41,470
	Unemployment Rate	10.1	9.7	10.5
North Carolina	Labor Force	4,478,113	4,497,722	4,428,910
	Employed	4,038,091	4,070,112	4,000,315
	Unemployed	440,022	427,610	428,595
	Unemployment Rate	9.8	9.5	9.7

Source: LAUS, NC Dept of Commerce, Labor and Economic Analysis Division

*December 2011 data are preliminary, while November 2011 data are revised and December 2010 data are benchmarked.

Unemployment Insurance Claims, December 2011

	Initial Claims	Weeks Claimed	UI Benefits Paid
Anson	155	1,182	\$209,638
Cabarrus	1,036	8,680	\$2,083,263
Iredell	1,224	8,772	\$1,989,591
Lincoln	616	3,925	\$886,918
Rowan	1,049	7,440	\$1,701,658
Stanly	477	3,029	\$636,612
Union	902	8,121	\$1,961,662
Statewide	68,396	490,159	\$112,967,496

Source: WRER, NC Dept of Commerce, Labor and Economic Analysis Division

Duration of Unemployment Insurance Benefits For 12 Months Ending Dec. 31, 2011*

Anson	Cabarrus	Iredell	Lincoln	Rowan	Stanly	Union	North Carolina
16.1	17.6	16.0	15.2	16.1	15.4	17.1	16.3

*Duration is the number of weeks compensated for the year, divided by the number of first payments.

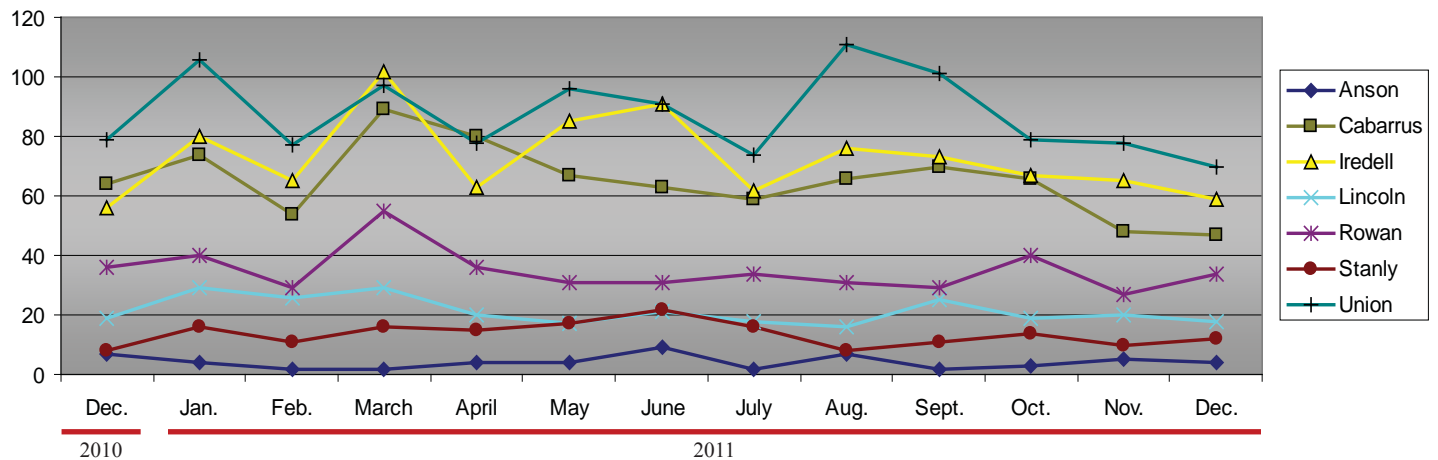
Centralina WDB Occupations With Most Ads* December 2011

	Volume
Registered Nurses	206
Occupational Therapists	155
Retail Salespersons	150
First-Line Supervisors/Managers of Retail Sales Workers	126
Physical Therapists	112
Speech-Language Pathologists	99
Computer Systems Analysts	90
Truck Drivers, Heavy and Tractor-Trailer	87
Licensed Practical and Licensed Vocational Nurses	71
First-Line Supervisors/Managers of Production and Operating Workers	70
Customer Service Representatives	68
Home Health Aides	67
Sales Representatives, Wholesale and Manufacturing, Except Technical and Scientific Products	63
Computer Support Specialists	58
Insurance Sales Agents	53

Source: The Conference Board Help Wanted Online

*Data represents labor demand, measured by online advertised vacancies.

New Corporations, December 2010–December 2011



Source: Department of the NC Secretary of State

North Carolina Department of Commerce
Labor and Economic Analysis Division
 P.O. Box 25903 Raleigh, 27611
 Phone: (919) 707-1500 Fax: (919) 733-8662

Email: esc.lmi.inquiries@ncsc.gov Website: www.ncsc.com