

## Quick Facts:

**Civilian Labor Force  
North Carolina  
February 2010**

*Seasonally Adjusted*

Employed - 4,038,734

Unemployed - 510,774

**NC Unemployment Rates  
February 2010**

*Seasonally Adjusted - 11.2*

*Not Seasonally Adjusted - 11.8*

**NC UI Average  
Weekly Benefit**

February 2010 - \$290.84

**NC Maximum Weekly Benefit  
Amount - \$505**

**Gender of Initial Claimants  
In the Centralina WDB  
February 2010**

Male - 72%

Female - 28%

**Age Ranges of Initial Claimants  
In the Centralina WDB  
February 2010**

16-19 - 1%

20-24 - 9%

25-34 - 23%

35-44 - 25%

45-54 - 25%

55-64 - 14%

≥65 - 3%

## Civilian Labor Force Estimates\* *Not Seasonally Adjusted*

		February 2010	January 2010	February 2009
<b>Anson</b>	Labor Force	10,347	10,339	10,450
	Employed	8,576	8,574	8,911
	Unemployed	1,771	1,765	1,539
	Unemployment Rate	17.1	17.1	14.7
<b>Cabarrus</b>	Labor Force	84,803	84,401	82,973
	Employed	73,470	73,459	73,747
	Unemployed	11,333	10,942	9,226
	Unemployment Rate	13.4	13.0	11.1
<b>Iredell</b>	Labor Force	80,831	80,740	82,925
	Employed	69,635	69,718	72,237
	Unemployed	11,196	11,022	10,688
	Unemployment Rate	13.9	13.7	12.9
<b>Lincoln</b>	Labor Force	38,707	38,814	41,093
	Employed	33,018	33,166	35,044
	Unemployed	5,689	5,648	6,049
	Unemployment Rate	14.7	14.6	14.7
<b>Rowan</b>	Labor Force	72,833	72,255	73,484
	Employed	62,608	62,329	64,710
	Unemployed	10,225	9,926	8,774
	Unemployment Rate	14.0	13.7	11.9
<b>Stanly</b>	Labor Force	30,796	30,566	31,048
	Employed	26,525	26,430	27,270
	Unemployed	4,271	4,136	3,778
	Unemployment Rate	13.9	13.5	12.2
<b>Union</b>	Labor Force	93,937	93,602	91,967
	Employed	82,899	82,887	82,185
	Unemployed	11,038	10,715	9,782
	Unemployment Rate	11.8	11.4	10.6
<b>Centralina</b>	Labor Force	412,254	410,717	413,940
	Employed	356,731	356,563	364,104
	Unemployed	55,523	54,154	49,836
	Unemployment Rate	13.5	13.2	12.0
<b>North Carolina</b>	Labor Force	4,527,935	4,521,839	4,559,066
	Employed	3,991,949	3,990,558	4,075,484
	Unemployed	535,986	531,281	483,582
	Unemployment Rate	11.8	11.7	10.6

Source: Labor Area Unemployment Statistics

\*February 2010 data are preliminary, while January 2010 are revised. February 2009 county data are revised, while February 2009 state data are benchmarked.

# Labor Market Information Update

## Unemployment Insurance Claims, February 2010

	Initial Claims	Weeks Claimed	UI Benefits Paid	Individuals Receiving Checks
Anson	239	2,743	\$544,540	731
Cabarrus	1,546	17,846	\$4,949,334	4,761
Iredell	1,413	17,364	\$4,633,928	4,637
Lincoln	926	8,138	\$2,115,814	2,294
Rowan	1,373	15,732	\$4,282,821	4,122
Stanly	820	7,147	\$1,763,420	1,991
Union	1,570	16,485	\$4,439,134	4,223
Statewide	76,208	832,679	\$211,943,497	220,761

Source: ES-UI Reporting Unit, Labor Market Information Division

## Duration of Unemployment Insurance Benefits For 12 Months Ending Feb. 28, 2010

Anson	Cabarrus	Iredell	Lincoln	Rowan	Stanly	Union	North Carolina
17.8	18.9	19.7	19.0	19.8	19.1	18.6	18.1

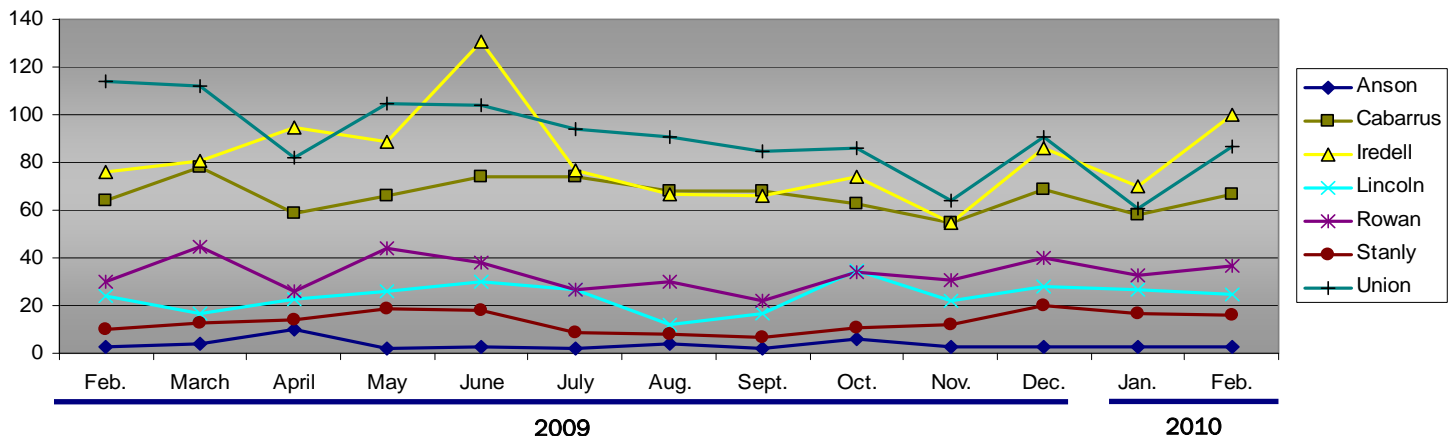
Note: Duration is the number of weeks compensated for the year divided by the number of first payments.

## ESC Employment Service Registered Applicants, 7/1/2009–2/28/2010

	Anson	Cabarrus	Iredell	Lincoln	Rowan	Stanly	Union
Professional, Technical & Managerial	446	3,961	3,118	1,232	2,199	1,002	3,568
Clerical	340	2,322	1,983	908	1,867	677	1,884
Sales	98	1,063	915	375	699	266	983
Domestic Services	8	33	61	20	36	31	47
Other Services	699	1,819	2,066	717	2,356	846	1,319
Agriculture, Forestry & Fishery	87	182	196	77	167	81	166
Processing	325	602	461	173	520	257	382
Machine Trade	262	1,153	1,827	995	1,706	657	862
Benchwork	148	455	907	562	635	255	333
Structural Work	290	2,126	1,774	976	2,630	1,008	1,698
Motor Freight & Transportation	135	670	644	286	636	238	457
Packaging & Material Handling	338	1,335	1,725	726	1,674	446	684
Miscellaneous	26	149	128	44	110	51	135

Note: Active Applicants and Job Openings YTD for the period 7/01/09–6/30/10.

## New Corporations, February 2009 – February 2010



Source: Department of the NC Secretary of State

Data provided by:

Labor Market Information, Employment Security Commission of North Carolina

P.O. Box 25903, Raleigh NC 27611

Phone: 919-733-2936 Fax: 919-733-8662

E-mail: [esc.lmi.inquiries@ncmail.net](mailto:esc.lmi.inquiries@ncmail.net) Web site: [www.ncesc.com](http://www.ncesc.com)