

Quick Facts:

*Civilian Labor Force
North Carolina*

October 2008

Seasonally Adjusted

Employed – 4,264,519

Unemployed – 318,997

NC Unemployment Rates

October 2008

Seasonally Adjusted – 7.0

Not Seasonally Adjusted – 6.7

NC UI Average

Weekly Benefit

October 2008 – \$280.20

NC Maximum Weekly Benefit

Amount – \$494

Gender of Initial Claimants

In the Centralina WDB

October 2008

Male – 64%

Female – 36%

Age Ranges of Initial Claimants

In the Centralina WDB

October 2008

16-19 – 2%

20-24 – 9%

25-34 – 22%

35-44 – 25%

45-54 – 25%

55-64 – 14%

≥65 – 3%

Civilian Labor Force Estimates* *Not Seasonally Adjusted*

		October 2008	September 2008	October 2007
Anson	Labor Force	11,091	10,956	10,808
	Employed	10,009	9,929	10,065
	Unemployed	1,082	1,027	743
	Unemployment Rate	9.8	9.4	6.9
Cabarrus	Labor Force	83,942	83,157	82,516
	Employed	78,508	77,880	78,948
	Unemployed	5,434	5,277	3,568
	Unemployment Rate	6.5	6.3	4.3
Iredell	Labor Force	83,031	82,921	82,360
	Employed	77,315	77,538	78,799
	Unemployed	5,716	5,383	3,561
	Unemployment Rate	6.9	6.5	4.3
Lincoln	Labor Force	41,404	41,573	40,381
	Employed	37,890	38,584	38,461
	Unemployed	3,514	2,989	1,920
	Unemployment Rate	8.5	7.2	4.8
Rowan	Labor Force	73,138	71,891	72,885
	Employed	67,799	66,694	68,788
	Unemployed	5,339	5,197	4,097
	Unemployment Rate	7.3	7.2	5.6
Stanly	Labor Force	31,386	31,296	31,417
	Employed	29,079	29,107	29,909
	Unemployed	2,307	2,189	1,508
	Unemployment Rate	7.4	7.0	4.8
Union	Labor Force	92,437	91,524	90,792
	Employed	86,683	85,989	87,168
	Unemployed	5,754	5,535	3,624
	Unemployment Rate	6.2	6.0	4.0
Centralina	Labor Force	416,429	413,318	411,159
	Employed	387,283	385,721	392,138
	Unemployed	29,146	27,597	19,021
	Unemployment Rate	7.0	6.7	4.6
North Carolina	Labor Force	4,593,841	4,572,021	4,531,855
	Employed	4,285,345	4,271,774	4,329,258
	Unemployed	308,496	300,247	202,597
	Unemployment Rate	6.7	6.6	4.5

*October 2008 data are preliminary, while September 2008 data are revised. October 2007 data are benchmarked.

Labor Market Information Update

Unemployment Insurance Claims, October 2008

	Initial Claims	Weeks Claimed	UI Benefits Paid	Individuals Receiving Checks
Anson	288	1,727	\$346,905	438
Cabarrus	1,130	8,255	\$2,019,905	2,028
Iredell	1,848	9,616	\$2,245,768	2,502
Lincoln	1,377	5,688	\$1,378,508	1,746
Rowan	1,585	8,630	\$2,038,922	2,250
Stanly	1,012	4,070	\$937,175	1,221
Union	1,252	8,643	\$2,219,682	2,042
Statewide	80,424	474,408	\$119,189,267	123,207

Source: ES-UI Reporting Unit, Labor Market Information Division

Duration of Unemployment Insurance Benefits For 12 Months Ending October 31, 2008

Anson	Cabarrus	Iredell	Lincoln	Rowan	Stanly	Union	North Carolina
13.9	14.2	13.7	12.2	14.6	12.7	14.0	13.8

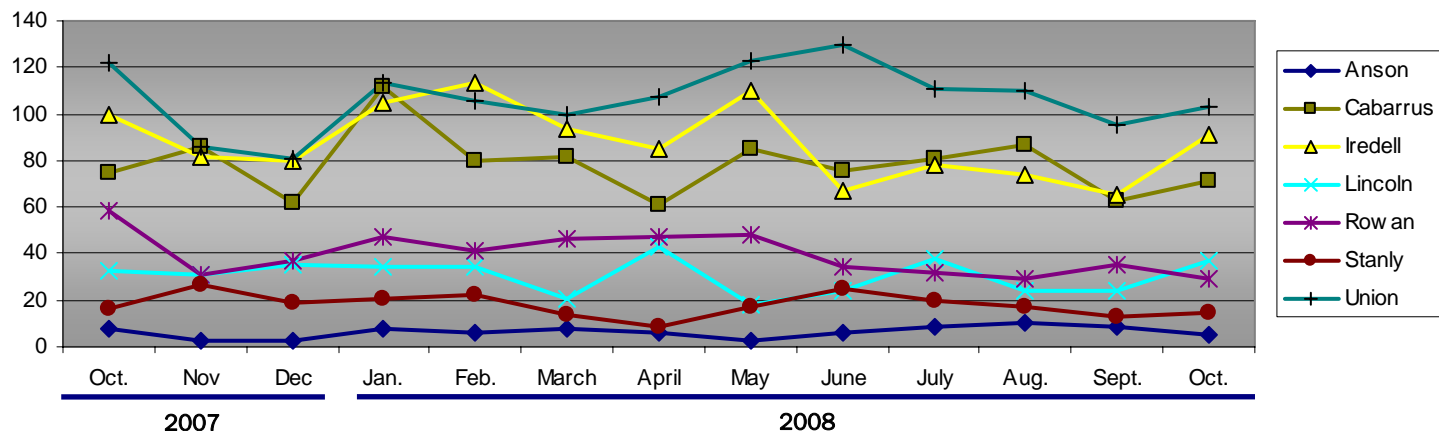
Note: Duration is the number of weeks compensated for the year divided by the number of first payments.

ESC Employment Service Registered Applicants, 7/1/2008–10/31/2008

	Anson	Cabarrus	Iredell	Lincoln	Rowan	Stanly	Union
Professional, Technical & Managerial	352	2,091	1,858	760	1,340	669	1,943
Clerical	302	1,630	1,500	676	1,451	559	1,287
Sales	76	604	588	237	517	188	560
Domestic Services	9	39	43	17	28	20	32
Other Services	591	1,270	1,473	514	1,770	706	843
Agriculture, Forestry & Fishery	81	116	121	42	105	63	97
Processing	285	316	308	115	329	175	255
Machine Trade	182	639	1,086	641	997	358	474
Benchwork	120	298	654	382	411	195	212
Structural Work	194	1,171	982	572	1,591	627	946
Motor Freight & Transportation	103	429	422	214	417	159	258
Packaging & Material Handling	294	871	1,206	539	1,173	380	488
Miscellaneous	21	65	75	28	74	41	118

Note: Active Applicants and Job Openings YTD for the period 7/01/08–06/30/09.

New Corporations, October 2007 – October 2008



Source: Department of the NC Secretary of State

Data provided by:

Labor Market Information, Employment Security Commission of North Carolina

P.O. Box 25903, Raleigh NC 27611

Phone: 919-733-2936 Fax: 919-733-8662

E-mail: esc.lmi.inquiries@ncmail.net Web site: www.ncesc.com