

Quick Facts:

Civilian Labor Force
North Carolina
October 2009

Seasonally Adjusted

Employed - 4,035,471

Unemployed - 496,279

NC Unemployment Rates
October 2009

Seasonally Adjusted - 11.0

Not Seasonally Adjusted - 10.7

NC UI Average
Weekly Benefit

October 2009 - \$297.88

NC Maximum Weekly Benefit
Amount - \$505

Gender of Initial Claimants
In the Centralina WDB
October 2009

Male - 70%

Female - 30%

Age Ranges of Initial Claimants
In the Centralina WDB
October 2009

16-19 - 2%

20-24 - 10%

25-34 - 22%

35-44 - 26%

45-54 - 25%

55-64 - 13%

≥65 - 2%

Civilian Labor Force Estimates* Not Seasonally Adjusted

		October 2009	September 2009	October 2008
Anson	Labor Force	10,669	10,499	10,721
	Employed	9,003	8,949	9,642
	Unemployed	1,666	1,550	1,079
	Unemployment Rate	15.6	14.8	10.1
Cabarrus	Labor Force	84,400	83,476	85,519
	Employed	74,509	74,059	79,802
	Unemployed	9,891	9,417	5,717
	Unemployment Rate	11.7	11.3	6.7
Iredell	Labor Force	80,004	80,881	79,523
	Employed	69,835	71,095	73,538
	Unemployed	10,169	9,786	5,985
	Unemployment Rate	12.7	12.1	7.5
Lincoln	Labor Force	39,060	39,731	40,231
	Employed	33,628	34,483	36,628
	Unemployed	5,432	5,248	3,603
	Unemployment Rate	13.9	13.2	9.0
Rowan	Labor Force	71,300	71,734	70,703
	Employed	61,851	62,563	65,213
	Unemployed	9,449	9,171	5,490
	Unemployment Rate	13.3	12.8	7.8
Stanly	Labor Force	30,233	30,698	30,354
	Employed	26,398	27,032	28,010
	Unemployed	3,835	3,666	2,344
	Unemployment Rate	12.7	11.9	7.7
Union	Labor Force	92,514	91,699	94,905
	Employed	83,034	82,532	88,932
	Unemployed	9,480	9,167	5,973
	Unemployment Rate	10.2	10.0	6.3
Centralina	Labor Force	408,180	408,718	411,956
	Employed	358,258	360,713	381,765
	Unemployed	49,922	48,005	30,191
	Unemployment Rate	12.2	11.7	7.3
North Carolina	Labor Force	4,544,493	4,526,072	4,589,994
	Employed	4,060,373	4,053,491	4,272,148
	Unemployed	484,120	472,581	317,846
	Unemployment Rate	10.7	10.4	6.9

Source: Labor Area Unemployment Statistics

*October 2009 data are preliminary, while September 2009 are revised and October 2008 data are benchmarked.

Labor Market Information Update

Unemployment Insurance Claims, October 2009

	Initial Claims	Weeks Claimed	UI Benefits Paid	Individuals Receiving Checks
Anson	244	2,674	\$564,399	704
Cabarrus	1,543	16,344	\$4,669,507	4,261
Iredell	1,499	14,851	\$4,147,781	4,075
Lincoln	804	7,783	\$2,063,556	2,173
Rowan	1,375	14,884	\$4,273,787	3,987
Stanly	606	5,735	\$1,532,966	1,586
Union	1,415	14,383	\$4,125,774	3,713
Statewide	78,430	732,856	\$192,361,220	196,561

Source: ES-UI Reporting Unit, Labor Market Information Division

Duration of Unemployment Insurance Benefits For 12 Months Ending Oct. 31, 2009

Anson	Cabarrus	Iredell	Lincoln	Rowan	Stanly	Union	North Carolina
15.3	16.9	16.4	16.6	16.9	16.4	17.1	16.3

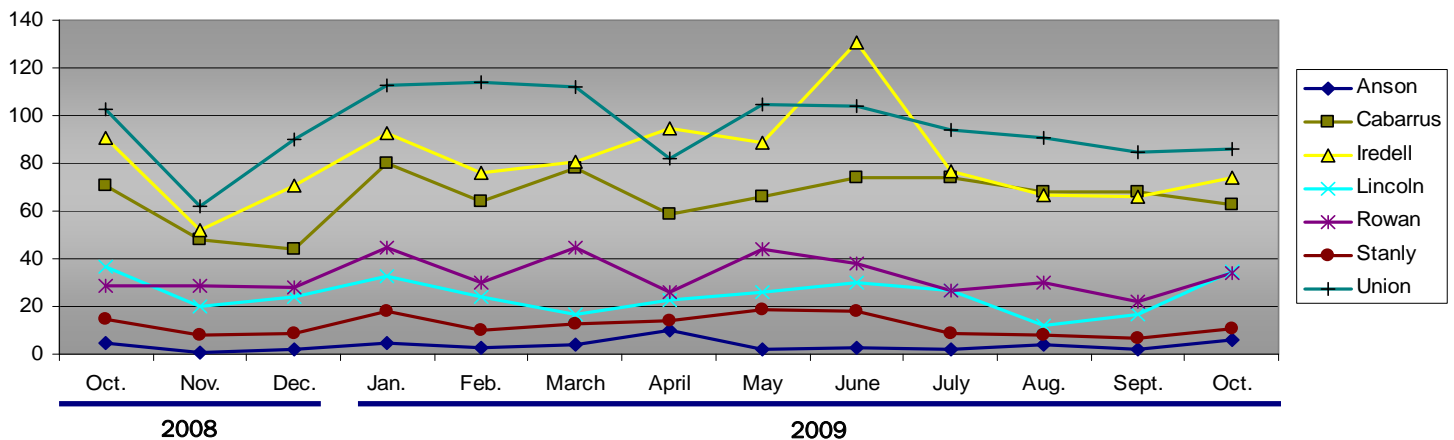
Note: Duration is the number of weeks compensated for the year divided by the number of first payments.

ESC Employment Service Registered Applicants, 7/1/2009–10/31/2009

	Anson	Cabarrus	Iredell	Lincoln	Rowan	Stanly	Union
Professional, Technical & Managerial	361	3,141	2,464	977	1,816	792	2,872
Clerical	277	1,815	1,593	737	1,466	536	1,521
Sales	79	840	723	307	553	219	764
Domestic Services	*	26	42	17	29	28	40
Other Services	595	1,397	1,599	547	1,883	655	994
Agriculture, Forestry & Fishery	70	140	136	58	134	60	120
Processing	281	495	382	137	447	214	308
Machine Trade	221	933	1,504	856	1,429	556	703
Benchwork	128	360	778	488	519	208	273
Structural Work	229	1,683	1,389	794	2,135	772	1,329
Motor Freight & Transportation	108	517	508	237	527	188	354
Packaging & Material Handling	296	1,082	1,413	623	1,368	370	533
Miscellaneous	*	122	105	30	82	41	106

Note: Active Applicants and Job Openings YTD for the period 7/01/09–06/30/10. * Data of three or less is suppressed.

New Corporations, October 2008 – October 2009



Source: Department of the NC Secretary of State

Data provided by:

Labor Market Information, Employment Security Commission of North Carolina

P.O. Box 25903, Raleigh NC 27611

Phone: 919-733-2936 Fax: 919-733-8662

E-mail: esc.lmi.inquiries@ncmail.net Web site: www.ncesc.com