

Quick Facts:

**Civilian Labor Force
North Carolina
September 2009**

Seasonally Adjusted

Employed - 4,042,297

Unemployed - 491,766

**NC Unemployment Rates
September 2009**

Seasonally Adjusted - 10.8

Not Seasonally Adjusted - 10.4

**NC UI Average
Weekly Benefit**

September 2009 - \$298.65

**NC Maximum Weekly Benefit
Amount - \$505**

**Gender of Initial Claimants
In the Centralina WDB
September 2009**

Male - 67%

Female - 33%

**Age Ranges of Initial Claimants
In the Centralina WDB
September 2009**

16-19 - 1%

20-24 - 9%

25-34 - 22%

35-44 - 26%

45-54 - 26%

55-64 - 13%

≥65 - 3%

Civilian Labor Force Estimates* *Not Seasonally Adjusted*

		September 2009	August 2009	September 2008
Anson	Labor Force	10,505	10,524	10,585
	Employed	8,946	8,944	9,590
	Unemployed	1,559	1,580	995
	Unemployment Rate	14.8	15.0	9.4
Cabarrus	Labor Force	83,520	83,542	84,559
	Employed	74,040	74,019	79,365
	Unemployed	9,480	9,523	5,194
	Unemployment Rate	11.4	11.4	6.1
Iredell	Labor Force	80,839	81,193	78,704
	Employed	71,059	71,106	73,429
	Unemployed	9,780	10,087	5,275
	Unemployment Rate	12.1	12.4	6.7
Lincoln	Labor Force	39,725	39,813	39,150
	Employed	34,471	34,351	36,233
	Unemployed	5,254	5,462	2,917
	Unemployment Rate	13.2	13.7	7.5
Rowan	Labor Force	71,709	70,853	69,958
	Employed	62,530	61,523	64,891
	Unemployed	9,179	9,330	5,067
	Unemployment Rate	12.8	13.2	7.2
Stanly	Labor Force	30,685	30,659	30,096
	Employed	27,019	26,931	27,971
	Unemployed	3,666	3,728	2,125
	Unemployment Rate	11.9	12.2	7.1
Union	Labor Force	91,724	91,892	93,896
	Employed	82,511	82,488	88,445
	Unemployed	9,213	9,404	5,451
	Unemployment Rate	10.0	10.2	5.8
Centralina	Labor Force	408,707	408,476	406,948
	Employed	360,576	359,362	379,924
	Unemployed	48,131	49,114	27,024
	Unemployment Rate	11.8	12.0	6.6
North Carolina	Labor Force	4,527,091	4,542,302	4,561,699
	Employed	4,054,662	4,056,569	4,267,969
	Unemployed	472,429	485,733	293,730
	Unemployment Rate	10.4	10.7	6.4

Source: Labor Area Unemployment Statistics

*September 2009 data are preliminary, while August 2009 are revised and September 2008 data are benchmarked.

Labor Market Information Update

Unemployment Insurance Claims, September 2009

	Initial Claims	Weeks Claimed	UI Benefits Paid	Individuals Receiving Checks
Anson	260	3,003	\$649,231	721
Cabarrus	1,496	17,390	\$4,978,411	4,327
Iredell	1,495	16,313	\$4,592,028	4,262
Lincoln	816	8,598	\$2,367,848	2,319
Rowan	1,315	16,502	\$4,811,199	4,086
Stanly	500	6,123	\$1,672,364	1,578
Union	1,159	15,333	\$4,275,643	3,642
Statewide	77,312	798,412	\$233,774,046	204,303

Source: ES-UI Reporting Unit, Labor Market Information Division

Duration of Unemployment Insurance Benefits For 12 Months Ending Sept. 30, 2009

Anson	Cabarrus	Iredell	Lincoln	Rowan	Stanly	Union	North Carolina
14.9	16.4	16.1	16.1	16.2	15.7	16.9	16.0

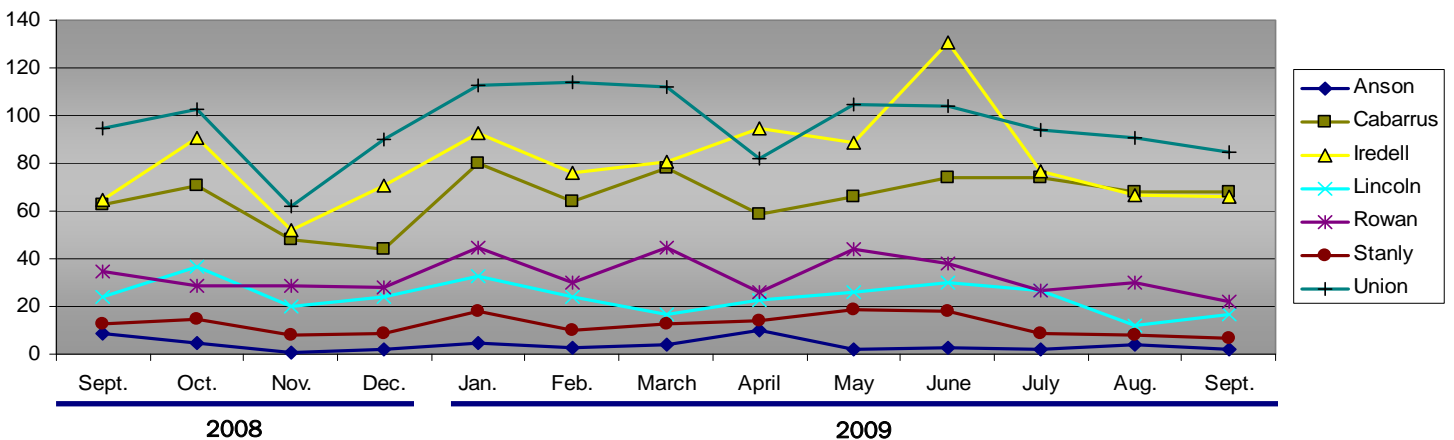
Note: Duration is the number of weeks compensated for the year divided by the number of first payments.

ESC Employment Service Registered Applicants, 7/1/2009–09/30/2009

	Anson	Cabarrus	Iredell	Lincoln	Rowan	Stanly	Union
Professional, Technical & Managerial	336	2,856	2,265	878	1,652	741	2,601
Clerical	248	1,686	1,454	670	1,348	506	1,361
Sales	74	779	668	279	533	205	691
Domestic Services	4	24	36	15	27	26	34
Other Services	555	1,279	1,463	507	1,746	594	890
Agriculture, Forestry & Fishery	68	127	118	55	120	58	108
Processing	250	457	367	127	418	212	276
Machine Trade	203	860	1,428	815	1,339	528	647
Benchwork	117	333	754	431	496	195	249
Structural Work	217	1,522	1,295	747	2,039	717	1,187
Motor Freight & Transportation	103	480	467	204	497	167	328
Packaging & Material Handling	287	1,002	1,325	576	1,275	344	498
Miscellaneous	19	110	98	29	76	41	98

Note: Active Applicants and Job Openings YTD for the period 7/01/09–06/30/10.

New Corporations, September 2008 – September 2009



Source: Department of the NC Secretary of State

Data provided by:

Labor Market Information, Employment Security Commission of North Carolina

P.O. Box 25903, Raleigh NC 27611

Phone: 919-733-2936 Fax: 919-733-8662

E-mail: esc.lmi.inquiries@ncmail.net Web site: www.ncesc.com