

## Quick Facts:

*Civilian Labor Force  
North Carolina*

*August 2008*

*Seasonally Adjusted*

*Employed – 4,253,086*

*Unemployed – 314,729*

*NC Unemployment Rates*

*August 2008*

*Seasonally Adjusted – 6.9*

*Not Seasonally Adjusted – 6.8*

*NC UI Average*

*Weekly Benefit*

*August 2008 – \$281.64*

*NC Maximum Weekly Benefit*

*Amount – \$494*

*Gender of Initial Claimants*

*In the Centralina WDB*

*August 2008*

*Male – 61%*

*Female – 39%*

*Age Ranges of Initial Claimants*

*In the Centralina WDB*

*August 2008*

*16-19 – 2%*

*20-24 – 10%*

*25-34 – 22%*

*35-44 – 26%*

*45-54 – 24%*

*55-64 – 14%*

*≥65 – 2%*

## Civilian Labor Force Estimates\* *Not Seasonally Adjusted*

		August 2008	July 2008	August 2007
<b>Anson</b>	Labor Force	10,991	11,091	10,742
	Employed	9,908	10,091	10,019
	Unemployed	1,083	1,000	723
	Unemployment Rate	9.9	9.0	6.7
<b>Cabarrus</b>	Labor Force	83,184	84,618	82,423
	Employed	77,718	79,151	78,591
	Unemployed	5,466	5,467	3,832
	Unemployment Rate	6.6	6.5	4.6
<b>Iredell</b>	Labor Force	83,282	84,518	81,006
	Employed	77,616	78,851	77,344
	Unemployed	5,666	5,667	3,662
	Unemployment Rate	6.8	6.7	4.5
<b>Lincoln</b>	Labor Force	41,423	42,148	40,332
	Employed	38,377	38,773	38,312
	Unemployed	3,046	3,375	2,020
	Unemployment Rate	7.4	8.0	5.0
<b>Rowan</b>	Labor Force	71,743	71,404	70,876
	Employed	65,905	65,698	66,429
	Unemployed	5,838	5,706	4,447
	Unemployment Rate	8.1	8.0	6.3
<b>Stanly</b>	Labor Force	31,158	31,308	31,109
	Employed	28,967	29,170	29,672
	Unemployed	2,191	2,138	1,437
	Unemployment Rate	7.0	6.8	4.6
<b>Union</b>	Labor Force	91,620	93,141	90,367
	Employed	85,811	87,392	86,774
	Unemployed	5,809	5,749	3,593
	Unemployment Rate	6.3	6.2	4.0
<b>Centralina</b>	Labor Force	413,401	418,228	406,855
	Employed	384,302	389,126	387,141
	Unemployed	29,099	29,102	19,714
	Unemployment Rate	7.0	7.0	4.8
<b>North Carolina</b>	Labor Force	4,591,356	4,664,770	4,525,212
	Employed	4,278,930	4,344,800	4,314,578
	Unemployed	312,426	319,970	210,634
	Unemployment Rate	6.8	6.9	4.7

\*August 2008 data are preliminary, while July 2008 data are revised. August 2007 data are benchmarked.

# Labor Market Information Update

## Unemployment Insurance Claims, August 2008

	Initial Claims	Weeks Claimed	UI Benefits Paid	Individuals Receiving Checks
Anson	201	1,538	\$257,482	368
Cabarrus	823	7,489	\$1,910,176	1,782
Iredell	1,010	8,383	\$2,114,891	2,047
Lincoln	996	4,640	\$1,121,347	1,425
Rowan	1,001	8,887	\$2,337,830	2,267
Stanly	656	3,229	\$703,115	890
Union	890	7,845	\$1,909,734	1,753
Statewide	63,817	437,743	\$99,500,277	107,644

Source: ES-UI Reporting Unit, Labor Market Information Division

## Duration of Unemployment Insurance Benefits For 12 Months Ending August 31, 2008

Anson	Cabarrus	Iredell	Lincoln	Rowan	Stanly	Union	North Carolina
13.9	14.6	14.3	12.5	16.2	12.5	13.8	14.0

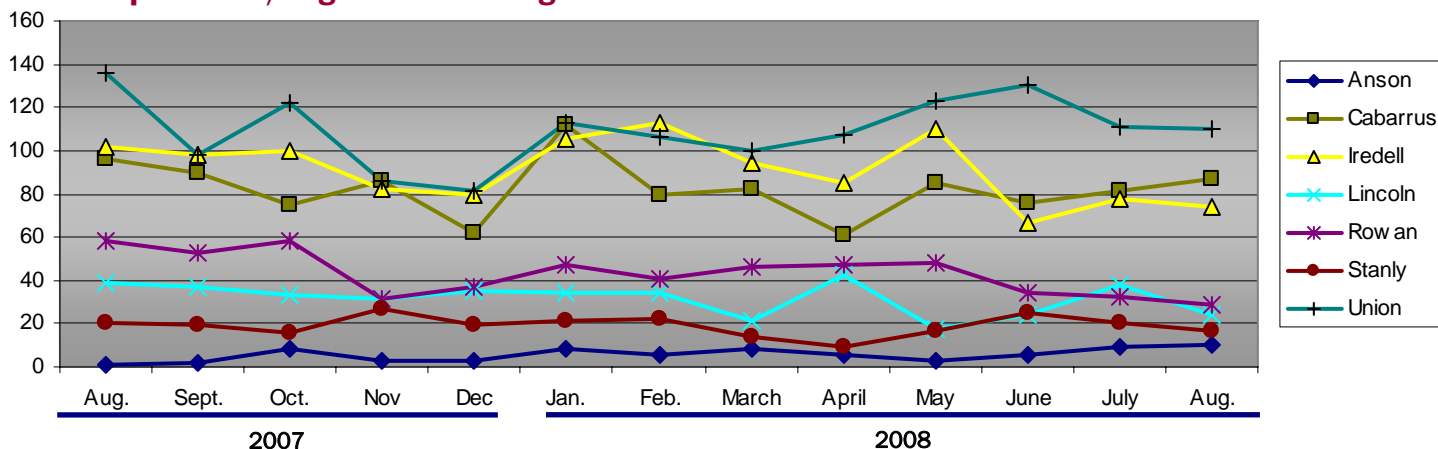
Note: Duration is the number of weeks compensated for the year divided by the number of first payments.

## ESC Employment Service Registered Applicants, 7/1/2008–08/31/2008

	Anson	Cabarrus	Iredell	Lincoln	Rowan	Stanly	Union
Professional, Technical & Managerial	297	1,634	1,417	600	1,056	525	1,530
Clerical	252	1,261	1,169	530	1,203	448	1,037
Sales	64	468	428	172	404	160	427
Domestic Services	4	28	29	15	24	17	20
Other Services	495	1,002	1,094	394	1,397	564	648
Agriculture, Forestry & Fishery	68	90	93	33	88	55	74
Processing	241	242	224	91	260	141	205
Machine Trade	156	479	830	512	778	274	347
Benchwork	94	227	494	312	337	153	169
Structural Work	154	864	736	449	1,286	479	707
Motor Freight & Transportation	84	333	304	166	323	128	190
Packaging & Material Handling	246	687	882	429	947	318	379
Miscellaneous	17	50	55	23	65	35	102

Note: Active Applicants and Job Openings YTD for the period 7/01/08–06/30/09.

## New Corporations, August 2007 – August 2008



Source: Department of the NC Secretary of State

Data provided by:

Labor Market Information, Employment Security Commission of North Carolina

P.O. Box 25903, Raleigh NC 27611

Phone: 919-733-2936 Fax: 919-733-8662

E-mail: [esc.lmi.inquiries@ncmail.net](mailto:esc.lmi.inquiries@ncmail.net) Web site: [www.ncesc.com](http://www.ncesc.com)